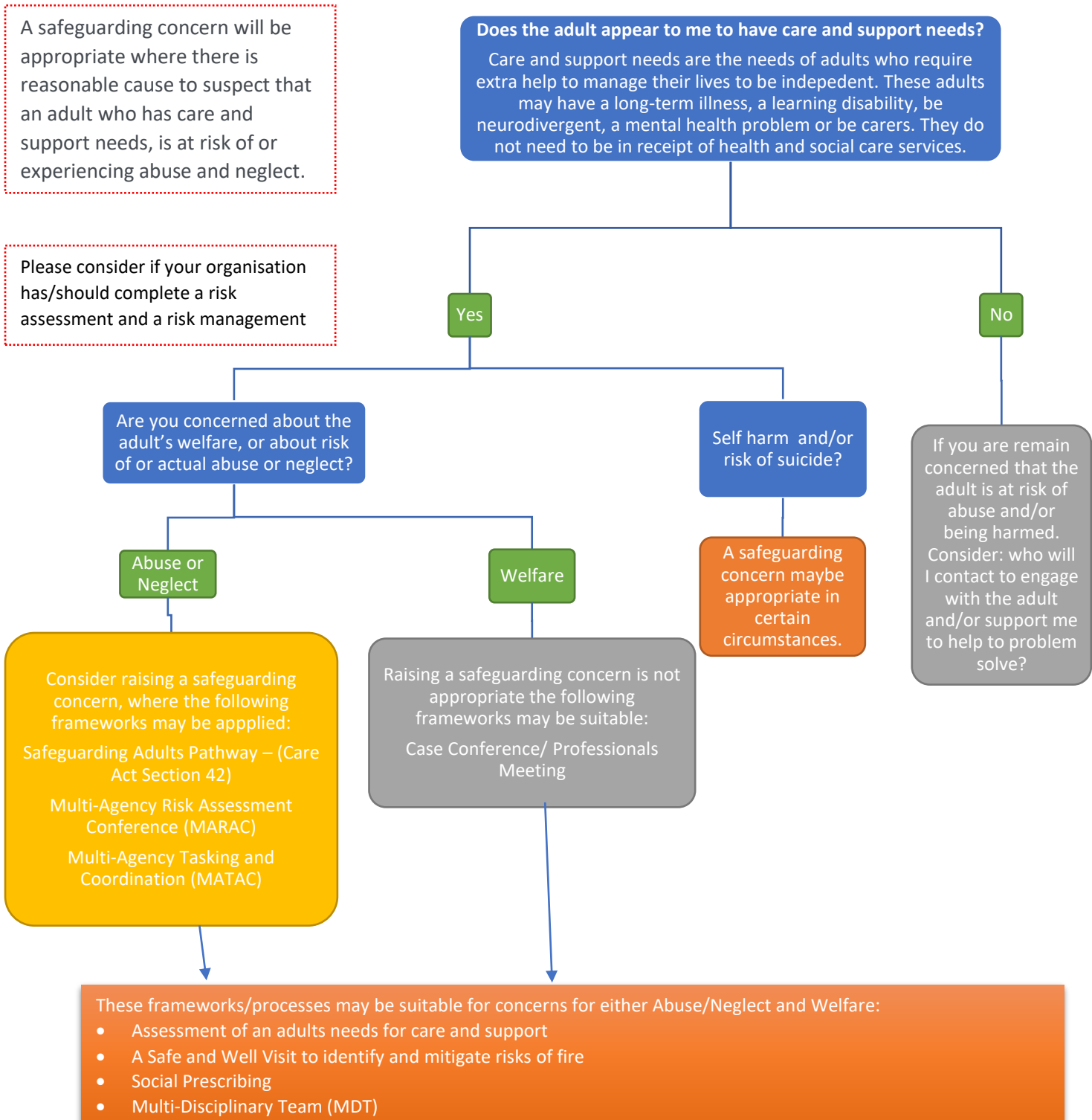


Pathways for multi-agency planning

Across the West of Berkshire there are several pathways available to use in order to support adults with care and support needs where there are concerns about their welfare and/or Abuse or Neglect. This document has been produced to support practitioners in their understanding of these frameworks.



Further Information

Please note that multi-agency meetings can be convened through all pathways listed.

Pathway Name	Areas Covered	When should be used	Links to further information
Safeguarding Adults Pathway – (Care Act Section 42)	All	When Abuse or Neglect is suspected towards an Adult at Risk.	Reading Borough Council West Berkshire Council Wokingham Borough Council
Assessment of an adults needs for care and support (Care Act Section 9)	All	When an Adult has physical or mental condition that has a significant impact on their wellbeing and management of everyday tasks.	Reading Borough Council West Berkshire Council Wokingham Borough Council
Refusal of Assessment (Care Act Section 11)	All	An Adult is unable to refuse an assessment under Care Act Section 9, when: the adult lacks capacity to refuse and assessment and it would be in the persons best interests. And/or, the adult is or is at risk of abuse and neglect.	Reading Borough Council West Berkshire Council Wokingham Borough Council
MARM – Supporting Individuals to Manage Risk and Multi Agency Framework	All	The function of MARM is to provide a higher level of oversight from relevant agencies to consider whether there are additional actions or interventions that can be offered, or whether Duty of Care has been discharged. After Safeguarding Adults Pathway – (Care Act Section 42) and Assessment of an adults needs for care and support (Care Act Section 9), have been exhausted and an unacceptable level of risk remains.	MARM West of Berkshire Safeguarding Adults Board (sabberkshirewest.co.uk)
Multi-Agency Risk Assessment Conference (MARAC)	All	MARAC is a multi-agency meeting which focuses on creating safety plans for high-risk domestic abuse survivors.	Resources for Marac meetings Safelives

Multi-Agency Tasking and Coordination (MATAC)		MATAC refers to the Multi-Agency Tasking and Coordination process of identifying and tackling serial perpetrators of domestic abuse perpetrators.	
Safe and Well Visit	All	A Safe and Well Visit is a free service that Royal Berkshire Fire Rescue Service provide to eligible residents. To identify and mitigate risks of fire.	Book a Safe and Well Visit Royal Berkshire Fire and Rescue Service (rbfrs.co.uk)
Social Prescribing	All	The aim of the Social Prescribing service is to link people aged 16 and over to the activities and support offered by Reading's voluntary and community groups, empowering people to improve their health and wellbeing.	Reading Wokingham Borough Council West Berkshire Council
Case Conferences	All	Is multi-agency meeting held to discuss an individual case.	Multi-agency Strategy Discussion/Meeting Guidance
Professionals Meeting	All	Is multi-agency meeting held to discuss an individual case.	Multi-agency Strategy Discussion/Meeting Guidance
GP Referral	All	To support an individual to access secondary health services.	Referrals for specialist care - NHS (www.nhs.uk)

Acknowledgements

- Guidance page has been created in response to the learning from Sandra Safeguarding Adult Review Full report on the [Case of Sandra](#) and [Practice Note](#) – Published July 2023

Created November 2023

Review Due November 2025